

Bassett Family Newsletter, Volume XXI, Issue 1, 15 Jan 2023

- (1) Welcome
- (2) Marshall Bass – Nora Israel Marriage License
- (3) Death of Leo Joseph Bassett – Bassetts Fine Food & Spirits
- (4) Photographs of Jessie Francis Bassett and Family (England & Pennsylvania)
- (5) J.E. Bassett Hardware Trading Card, New Haven, Connecticut
- (6) Death of Govert Lockerman Bassett
- (7) Arizona Ranger Bud Bassett Star Badge
- (8) New family lines combined or added since the last newsletter
- (9) DNA project update

The newsletter link page is below. Once you get to this page, choose the current month to see the current newsletter.

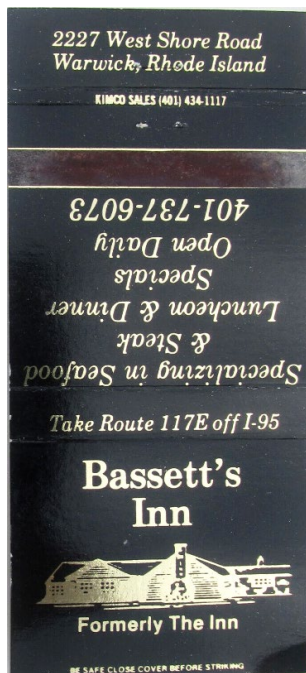
You can either view in a PDF or in a word document format.

<http://bassettbranches.org/newsletters/newsletters2014on.shtml>

Section 1 - Welcome

Happy New Year!

Totals number of individuals loaded into the Bassett website: 204,949



* * * * *

Section 2 - Featured Bassett Marshall Bassett – Nora Israel Marriage License

Marshall Bassett descends from William Bassett of Plymouth, Massachusetts as follows:

- William Bassett and wife Elizabeth
- William Bassett (b. 1624) and wife Mary Rainsford
- William Bassett (b. 1656) and wife Rachel Willison
- William Bassett (b. 1681) and wife Abigail Bourne
- William Bassett (b. 1711) and wife Lydia Smith
- Rufus Bassett (b. 1757) and wife Jedidah Handy
- Nymphas Bassett (b. 1785) and wife Thankful Ann Bruce
- Oliver C. Bassett (b. 1824) and wife Elizabeth Monroney
- Marshall Bassett (b. 1858) and wife Sonora J. Israel



Wedding License for Marshall Bassett and Senora J. Israel

* * * * *

Section 3 - Featured Bassett: Death of Leo Joseph Bassett – Bassett's Fine Food & Sprints

Leo Joseph Bassett descends from William Bassett of Plymouth, Massachusetts as follows

William Bassett and wife Elizabeth

William Bassett (b. 1624) and wife Mary Raynesford

Nathan Bassett (b. 1667) and wife Mary Huckins

Samuel Bassett (b. 1693) and wife Martha Pease

Cornelius Bassett (b. 1722) and wife Lydia Norton

Ebenezer Bassett (b. 1751) and wife Abigail Adams

Cornelius Bassett (b. 1788) and wife Elizabeth Cushing

George Thompson Bassett (b. 1837) and wife Lucretia Lockwood

George E. Bassett (b. 1876)

George Thompson Bassett (b. 1902) and wife Mary

Leo Joseph Bassett



The Washington Post, 4 January 2023
Leo Joseph Bassett Sr.

Leo Joseph Bassett Sr. of Deale, MD died peacefully December 31, 2022 aged 88. Leo was born June 6, 1934 in Washington, DC to George and Mary Bassett.

Upon graduating high school he attended Corcoran School of the Arts & Design in Washington, DC. In 1957 he was drafted into the Marine Corps where he spent two years as an Illustrator.

Leo's green thumb, eye for design and artistic talents were reflected in his many projects throughout the years.

In Washington, DC he established Colonial Flower and Garden and The Green House. Other of Leo's notable works includes landscape design at Roosevelt Island, The Kennedy Center and The National Zoo's Panda House. Leo's floral and landscape designs were admired by many over the years at Clyde's Restaurants throughout the DC area. In the late 90's Leo ventured into the restaurant business and will be fondly remembered by many in the town of Poolesville as the owner/operator of Bassett's restaurant.

Leo's love for restoring homes kept him very busy both in Poolesville and later after retirement in Deale, MD.

He is survived by his sister Joan Ross; his children Leo Bassett Jr. and partner Karyn Seymour; daughter Victoria Clyne and husband Ken Clyne; as well as his grandchildren Caroline and Eric and his late-wife Betty's sons Brian and Mark Dawson.

Leo was preceded in death by his daughter Maria Bassett, wife Elizabeth Bassett and brothers George and James Bassett.

The family will be receiving friends at Hilton Funeral Home, 22111 Beallsville Road, Barnesville, MD, on Thursday, January 5, 2022 from 6 to 8 p.m. Graveside service is private. Leo's final resting place will be with his wife Elizabeth at Gate of Heaven Cemetery, Silver Spring, MD. Arrangements were handled by Hilton Funeral Home.

Section 4 - Featured Bassett: Photographs of Jessie Francis Bassett and Family

Jessie Francis Bassett descends from #65B John Bassett of England as follows:

John Bassett (b. 1770) and wife Jane Bailey
George Bassett (b. 1805) and wife Elizabeth Butler
Albert E. Bassett (b. 1841) and wife Alice S. Jewell
Jessie Francis Bassett (b. 1873) and husband James Carson Reed
Elsie Reed (b. 1897)



Allie Jewel Bassett with granddaughter Elsie Reed



Jessie Francis Bassett Reed

Pictures provided by descendant Sharon Dipaola

Section 5 - Featured Bassett: J.E. Bassett Hardware Trading Card, New Haven, Connecticut

John E. Bassett descends from #3B Thomas Bassett of Connecticut as follows:

Thomas Bassett (b. 1598) and wife Joanna Beardsley
Thomas Bassett (b. 1660) and wife Sarah Baldwin
Josiah Bassett (b. 1690) and wife Alice Canfield
Samuel Bassett (b. 1723) and wife Susannah Morris
David Bassett (b. 1754) and wife Sarah Oviatt
David Bassett (b. 1782) and wife Mary Rhoades
David Bassett (b. 1808) and wife Mary A. Jarvis
John E. Bassett (b. 1830)

John E. Bassett and his hardware store located in New Haven, Connecticut have been featured in several past newsletters.

The "New Easy" Lawn Mower.

"THE STANDARD."

MARVELOUS IN EASE OF OPERATION.

The best to buy or sell. The Easiest to operate or keep in repair. Constructed of Steel, Wrought and Malleable Iron. The ONLY Mower that will cut narrow borders and close to walls and fences.

In use at all the principal Summer Resorts, Government and Public Grounds, Cemeteries, and upon thousands of the best private lawns in all parts of the United States and Great Britain, and in every civilized country in the world. Made in seven sizes, 10 inch to 24 inch, all for hand use.

EVERY MOWER WARRANTED.

PRICE LIST.

List Price.	Retail Price.	List Price.	Retail Price.
10 in. \$13.00		16 in. \$19.00	
12 in. 15.00		18 in. 21.00	
14 in. 17.00		20 in. 23.00	
		24 inch, geared at each end, \$30.00	

MANUFACTURED BY
BLAIR MANUFACTURING COMPANY,
SPRINGFIELD, Mass., U. S. A.

J. E. BASSETT & Co.,
NEW HAVEN, CONN.

J.E. Bassett & Co. Trading Card currently for sale on ebay.

Section 6 - Featured Bassett: Death of Govert Loockerman Bassett

Govert Loockerman Bassett descends from #6B William Bassett of Connecticut as follows:

William Bassett and wife Hannah Dickerman
John Bassett (b. 1652) and wife Mercy Todd
John Bassett (b. 1691) and wife Elizabeth Thompson
William Bassett (b. 1718) and wife Mabel Goodyear
Hezekiah Bassett (b. 1745) and wife Mary Baldwin
Hezekiah Bassett (b. 1774) and wife Lowly Atwater
Medad Atwater Bassett (b. 1812) and wife Mary Tuttle
Charles M. Bassett (b. 1854) and wife Laura E. Smith
Harold R. Bassett (b. 1892) and wife Vesta Loockerman
Govert Loockerman Bassett (b. 1928)

William Bassett and wife Elizabeth
Joseph Bassett

Anderson & Goff Mortuary
Govert Loockerman Bassett
November 7, 1928 - November 29, 2022

Govert Loockerman Bassett, who was known to all of his friends as Sandy, age 94, passed away on November 29, 2022 at his home in Legacy Village in Sugarhouse, Utah from old age. He is preceded in death by beloved wife Caroline Wroe Bassett, his brother Charles Andrew Loockerman Bassett, MD (Cal), his mother Vesta Loockerman Bassett, his father Harold Bassett, and his grandson Kyle Emerson Bassett.

Sandy was born November 7, 1928 in the small town of Crisfield, MD along the Chesapeake Bay. After graduating from Crisfield High School and having a short stint at Hill Boarding School in Pottstown, PA he attended the US Naval Academy in Annapolis, MD. After serving in the US Navy he held jobs with Pratt and Whitney, Honeywell, Amphenol, Etri, Osteodyne, and finally AWI. His career took him to many places in the world including the UK, France, Italy, Greece and Japan as well as nearly every state in the US.

Sandy met his wife Carol in 1952 and after a brief time they were married on his birthday in 1953. Sandy and Carol had three boys, Govert Loockerman II (Tad), Dana Wroe, and Joel Breckenridge. Sandy is survived by his three boys, his sister-in-law Nancy, Tad's wife Cindy, Dana's wife Le Thu, Joel's partner Marky, granddaughter Allison, her husband John, cousin Jane and several nieces, nephews, grand nieces, and grand nephews.

Sandy was accomplished at many things. He loved skiing which he took up at the young age of 69. Like everything else he tried he put his full effort into the sport, soon taking up the new parabolic skis. He kept up skiing for another 18 years. He was a pilot, first flying navy planes, then taking a very long sabbatical only to take it up again with sail planes when he was well into his 50's. He would spend many hours working to get the outer surface of his sail plane as frictionless as possible to ensure that it would slip through the air with the minimum of resistance. Then he would go to competitions, dragging Carol along in order to have someone to come find him when the lift ran out – typically in some farmer's field well off the beaten track. He remodeled houses, built model rockets and model airplanes, collected baskets full of starfish while snorkeling, and was pretty fearless when trying something new. When Carol got pancreatic cancer, he became her care giver right to the end.

Sandy was always kind to others and always polite. He was always ready to help anyone in any way he could and everyone who knew him would always comment on how much fun it was to be around him and know him.

Sandy's family would like to thank the staff of both Legacy Village of Sugarhouse and Enhabit Home Health and Hospice for the fantastic care they provided for Sandy during the last 4 years of his life. They treated him with dignity, compassion, friendship and they eased his passing on to the other side.

In lieu of flowers, the family requests that donations be made in Sandy and Carol's name to the Huntsman Cancer Institute. A celebration of life for Sandy will be held at a future date. Details can be found at this website when they become available.

* * * * *

[Section 7 - Featured Bassett: Arizona Ranger Bud Bassett Star Badge](#)

James Henry "Bud" Bassett descended from #57B William Bassett as follows:

William Bassett

Nathaniel Bassett and wife Trisshena Spear

Thomas Spear Bassett (b. 1818) and wife Sarah McLaughin

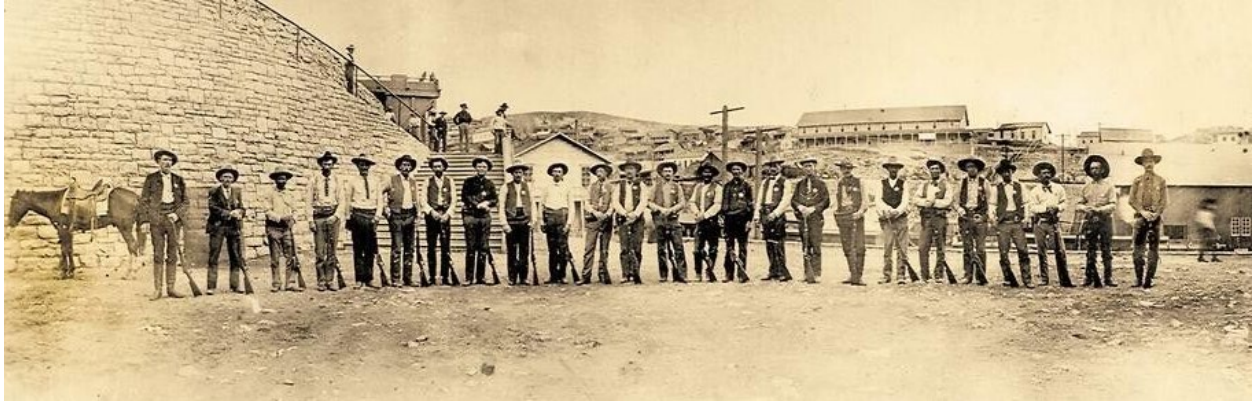
Josiah S. Bassett (b. 1835) and wife Susan Gibbs

James Henry "Bud" Bassett (b. 1868) who was an Arizona Ranger



Bud Bassett, Arizona Ranger (picture provided by grandson Jeff S. Bassett)

This family was originally documented in the [September 2009 newsletter](#).



Arizona Rangers Photograph



Bud Bassett Arizona Ranger Star Badge currently for sale on ebay

* * * * *

[Section 8 - New family lines combined or added since the last newsletter](#)

No Bassett family lines have been added or merged since the last newsletter

* * * * *

[Section 9 - DNA project update.](#)

One new Bassett Y-DNA was ordered this month. Results are not yet back from the lab.

No new results to report on the Bassett DNA project.

Donations of any amount can be made to the Bassett DNA project by clicking on the link below. Any funds donated will be used to fund select Bassett DNA tests that will further our project as a whole and benefit all Bassetts worldwide.

<http://www.familytreedna.com/group-general-fund-contribution.aspx?g=Bassett>

This is just a reminder that the DNA portion of the Bassett Family Association can be found at:

A current spreadsheet of results can be found at:

<http://www.bassettbranches.org/dna/BassettDNA.xls>

If you don't have Excel and can't open the spreadsheet above, you can now see the DNA test results at the following website.

<http://www.familytreedna.com/public/Bassett/>

Jeffrey Bassett
520 Salceda Drive
Mundelein, IL 60060 USA
bassettgenealogy@gmail.com