

## Splinters From the Tree – December 2014

- (1) Welcome
- (2) Basset Tehidy Estate Today
- (3) Joseph Roundy Bassett Jr. suicide
- (4) Edna A. Bassett of California
- (5) Louis Bassett of France and son Jule Stephen Bassett wedding photograph
- (6) Beaupre Castle of Wales for Sale
- (7) Captain Leslie Burr Bassett Civil War Photograph
- (8) New family lines combined or added since the last newsletter
- (9) DNA project update

### Section 1 - Welcome

I will be travelling much of the first half of 2015, so I may have to scale back the newsletter just a bit, but I will hopefully still have time to get an issue out each month.

My next DNA talk will be on Thursday, January 8<sup>th</sup> at the McHenry County Genealogical Society to be held in Crystal Lake, Illinois.

I will also be in Salt Lake City for several weeks in the spring and am working on setting up a talk at the Family History Library if they will have me there. Watch future newsletters for more information about the Salt Lake City talk.

\* \* \* \* \*

### Section 2 - Featured Bassett: Basset Tehidy Estate Today

My postcard last month of the Bassett Tehidy Estate prompted the following article written by Margaret Morgan of the #229B Thomas Basset of Illogan, Cornwall family line.

She currently owns the Sheoaks B&B in Tasmania.

The link for their B&B is below.



<http://www.sheoaks.com/>

### **Tehidy Park Today.**

On our last visit to the UK we stayed just out of Portreath for 10 days. Lavender Cottage, our holiday accommodation, was once part of the grooms cottage for Tehidy Park. The Bassets

must have had a number of grooms. Lavender Cottage was a very spacious 2 bedroom apartment and the original stone building is now divided into 3 such apartments. This figures as they were involved in horse racing.

Our cottage faced Tehidy Park golf course, superbly laid out with a substantial and attractively sited golf club, including a restaurant open to the public. The following is from the golf club's website.

*"In 1922, businessmen from the Camborne-Redruth area leased 75 acres of the erstwhile Basset Estate and enlisted the help of one of the great Cornishmen, the Open Champion Jim Barnes, to advise them on the layout of the first course. This was in play in October of 1922 and at that time measured what we would now consider to be a meagre 5000 yards. With the equipment of the day and the existence of fine woodland, it would, no doubt, have been as tough a test as the present layout.*

*Shortly after World War II, the noted golf course architect C.K.Cotton was utilised to design and build some noteworthy improvements, bringing the course to only a little short of its current length of 6241 yards. It should be added that the course, although undulating, is never unduly arduous to walk, the only tough climb being up the difficult par 4 15th hole of 443 yards.*

*In 1996, the freehold was purchased and in 1998 extensive work was undertaken to provide an improved watering system, which incorporated the building of three lakes, which have a significant presence on the closing holes of the course. Continuous improvement is now a watchword of the Club and the appointment in 2002 of Head Greenkeeper Andrew Eddison should ensure that future improvements are carried out to the highest standards."*

Behind our cottage and round about was the 250 acre Tehidy Country Park, with miles of well maintained walking tracks, a linked system of small lakes and a pleasantly situated cafe with indoor and outdoor eating areas. There's also an events field which can be hired (and has its own program of summer and winter events as well), outdoor education facilities, a permanent orienteering course and a schools and youth campsite. Situated in a specially designated woodland area are barbecues, which can be hired for family gatherings, etc. The park is a haven for wildlife (including otters) and in spring the woodland is carpeted with ramsons, wild daffodils, then bluebells. We just caught the end of the latter, but were in time to enjoy masses of brilliant pink campions and foxgloves. Tehidy Park is now a wonderful and well used community facility.

In the middle of all this is the building in your featured post card, now divided into luxury apartments and at the centre of a gated residential community. Although excised from the country park, the private grounds are still extensive, including both newer plantings and mature trees dating back to the Basset era. Additional luxury houses have been built beside the original mansion. I imagine it would be a very attractive place to live. Thanks to the existence of the country park, it can never be encroached on, always remaining quietly rural, while still being

relatively close to the wide range of facilities in Redruth/Camborne and a bit further afield, to those of Truro and Penzance.



Current picture of Tehidy Park

Tehidy County Park Sign (with Basset Coat of Arms)

\* \* \* \* \*

[Section 3 - Featured Bassett: Joseph Roundy Bassett Jr. suicide](#)

Joseph Roundy Bassett Jr. descends from #217B Matthew Bassett of Marblehead, Massachusetts as follows:

- Matthew Bassett and wife Elizabeth Mailey
- John Mailey Bassett (b. 1778) and wife Sarah Duparr
- Joseph Roundy Bassett (b. 1818) and wife Sarah A. Anderton
- Joseph Roundy Bassett Jr. (b. 1839)

Salt Lake Telegram, Saturday, August 20, 1904

Suicide of a Promoter

J.R. Bassett of Denver Dies From the Effects of Morphine

J.R. Bassett of Denver, a mining promoter, broken in fortune and health, died in a rooming-house at 144 West Third South street Friday night as the result of an overdose of morphine, which he is believed to have taken with suicidal intent.

He was president of the Irrigation, Mining and Land company of Denver. He had been here a month and had lived in a private room, where he had spent much of his time. He was about 60 years old.

Bassett left the room about 6 o'clock Friday, going out the back door, but returned in a few minutes and went to bed. The landlady had noticed prior to this time that he snored heavily when he slept and thought nothing wrong when he slept late and snored loudly. At 2 o'clock Friday afternoon, however, she became frightened, as Bassett was still sleeping and was breathing heavily. Her husband went to the room and knocked, but received no response. He then went into the room and shook Bassett, who muttered, but could not be awakened. The landlady then became frightened and called Dr. Odell and Dr. Snyder, who worked over the unfortunate man until 8:30 o'clock at night, when he died.

Among Bassett's effects was found the following note, dated April 2, 1904: "To Whom It May Concern: In case of death I wish to be placed in a pine casket and if out of Denver, me remains be expressed to Denver and transferred only in an express wagon to the crematory, and for expenses notify Royal Arcanum lodge NO. 757, South Acton, Mass. Be me as my last request. (Signed) J.R. Bassett."

The request in the letter will be carried out.

\* \* \* \* \*

#### Section 4 - Featured Bassett: Edna A Bassett of California

Edna was married to Thomas Bradford Bassett.

Thomas Bradford Bassett descends from William Bassett of Plymouth as follows:

William Bassett and wife Elizabeth

Nathaniel Bassett (b. 1628) and wife Dorcas Joyce

Samuel Bassett (b. 1670) and wife Elizabeth Jones

Samuel Bassett (b. 1700) and wife Alice Weaver

Samuel Bassett (b. 1736) and wife Tabitha Waite

John Bassett (b. 1770) and wife Clarissa Kellogg

Samuel Kellogg Bassett (b. 1804) and wife Jane Augusta Bradford

Owen Abbott Bassett (b. 1834) and wife Josephine Eliza Butland

Thomas Bradford Bassett

San Francisco Chronicle, Tuesday, July 24, 1923

California Woman Active in Turkey

Mrs. E.A. Bassett Leads Near East Relief

To her original duties as hostess at the Constantinople Near East Relief personnel house, Mrs. Edna A. Bassett, a California clubwoman and welfare worker, has added the work of the important directorship of the case committee and orphanages according to word received by San Francisco friends of Mrs. Bassett.

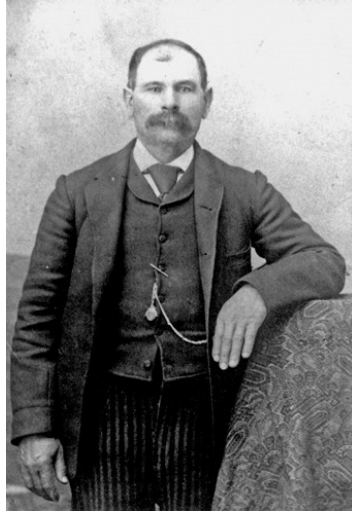
Mrs. Bassett volunteered as a Near East relief worker at Samsoun, on the Black Sea coast of Turkey, while on a tour of Europe two years ago. There she underwent a heavy bombardment by the Greek fleet and showed great resourcefulness in removing several hundred orphans to places of safety.

Mrs. Bassett is well known on the Pacific Coast as the widow of the late Thomas Bradford Bassett, noted mining engineer, who opened up the Brazil diamond mines and did exploration work for mining companies in California, Arizona, Mexico and South America.

\* \* \* \* \*

Section 5 - Featured Bassett: Louis Bassett of France and Nebraska

Louis Bassett (#214BB was from France. He settled with his family in Nebraska. The names of his parents are not yet know.



Louis Bassett (from ancestry.com)

*Fairbury Journal*  
Friday June 2, 1905  
Death of Louis Bassett

Louis Bassett, father of Mrs. L.J. Bergeron, died Monday afternoon at the home of his daughter over the "Home Bakery" on the west side of the square.

Mr. Bassett had been sick since last January with heart and lung trouble. He was born in France 72 years ago and came to America about 50 years ago, landing in Nebraska in 1883 near Hastings. Here he lived about 22 years and then moved to Hebron and from there to Fairbury about two years ago. Since the death of his wife he has lived with his daughter. Besides Mrs. Bergeron there are three other children.

A brief service was held at the home here over the remains by Father Carey of St. Michael's church Wednesday afternoon, after which the body was taken to Hastings for final ceremonies and burial.

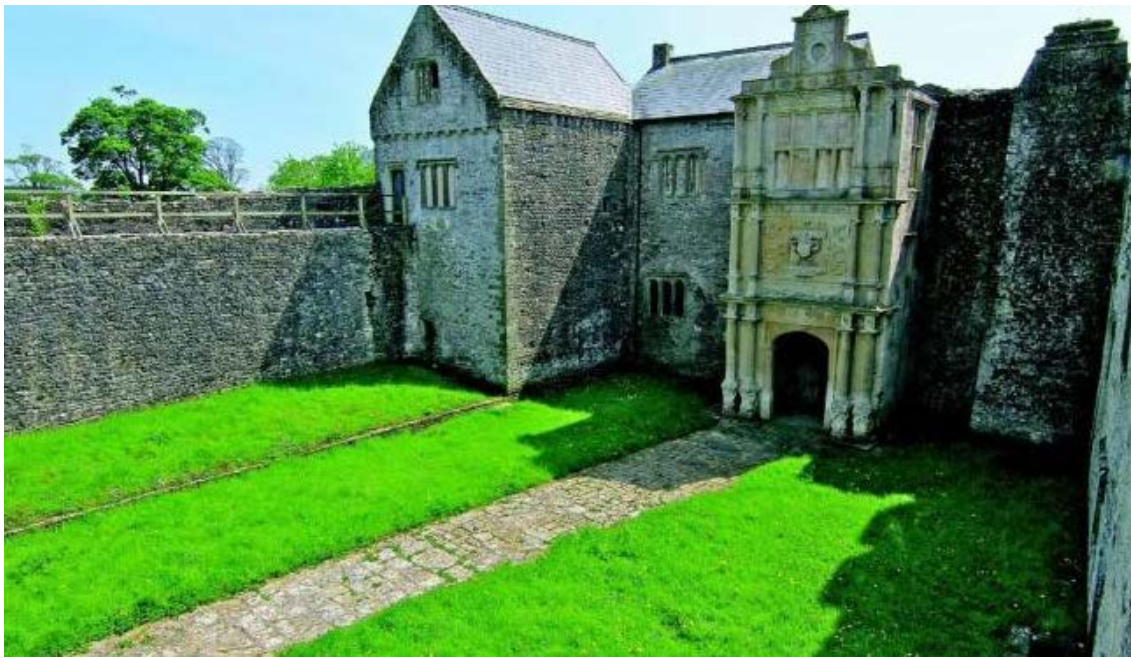


Jule Stephen Bassett and Josephine Bergeron wedding photograph (from ancestry.com)

\* \* \* \*

### [Section 6 - Featured Bassett: Beaupre Castle of Wales for Sale](#)

Jillian Albrecht, a direct descendant of the Beaupre Bassett family, has sent me information showing that the Bassett Beaupre Castle is for sale. Anyone descending from a Welsh Bassett family might be interested in the following:



**£1,250,000 5 bedroom detached house for sale**

**Full description**

The house is situated in the south east wing of the castle, attached to the east end of the southern range, and dates from the 14th Century. It is Listed Grade II\*, by virtue of its early date, surviving internal features, historic importance and group value with the Old Beaupre complex. Today it offers an unique opportunity to live in and be part of one of the most important historic houses in the Vale of Glamorgan. The house is very well appointed and carefully restored in keeping with its history. The Freehold title extends to approximately 6.36 acres (2.57 ha), which includes the Grade I listed castle in the Guardianship of CADW. Public access to the castle is via a footpath through the neighbours fields. The land is sub-divided into four paddocks and an orchard with clearly defined boundaries. There are four stables and several outhouses. There are Riparian rights on the River Thaw. Within the grounds is a two storey Grade II\* listed building that has a lapsed planning consent for conversion into holiday accommodation. The walled garden leads down to the broad terrace offering a dramatic view of the Thaw Valley. There is a large south facing sheltered courtyard immediately to the rear of the farmhouse and a large area to the front with informal gardens and parking for many cars. The farmhouse is accessed from a long private drive, shared with the neighbouring farm.

Here is the link to see more details:

<http://www.rightmove.co.uk/property-for-sale/property-47338516.html/svr/2120;jsessionid=1AE59FE9C2A198B78E9A2C4CE81AD5BA>

\*\*\*\*\*

### [Section 7 - Featured Bassett: Leslie Burr Bassett Civil War Photograph](#)

Leslie Burr Bassett descends from #1B John Bassett as follows:

John Bassett and wife Margery

Robert Bassett

Robert Bassett (b. 1640) and wife Elizabeth Riggs

Samuel Bassett (b. 1692) and wife Deborah Bennett

Samuel Bassett (b. 1719) and wife Sarah Botsford

David Bassett (b. 1749) and wife Mable Tomlinson

John Bassett (b. 1775) and wife Louise Clemens

David Burr Bassett (b. 1807) and wife Sophronia Snow

Leslie Burr Bassett (b. 1835)

Keokuk County Biographies  
Richland Township

Bassett, Leslie Captain postmaster at Richland; he was born July 12, 1835 in Ohio; he was educated at Woodward and Oberlin college, there he lived til 1859, when he came to Washington county, Iowa; he enlisted in 1861 as a private in Company K, Thirteenth Iowa Infantry, was promoted to quartermaster sergeant after eight months service, to first lieutenant of his company September 17, 1862, and to captain February 1, 1863, served until the close of the war and was honorably discharged November 1, 1864; he was appointed acting assistant inspector general July 10, 1864, by order of Major General F.P. Blair, at the close of the war he came to Washington county, Iowa; was married March 8, 1865 to Miss Mary Israel, a native of Ohio; she died July 3, 1871, leaving a family of two children living; Nellie A. and Bessie A. and one infant, deceased; was married again March 18, 1874, to Miss Lizzie Armentrout, a native of Ohio; she died October 12, 1878; since 1868 he has been in the drug business in Richland; he is now postmaster of Richland and candidate for county auditor on the Republican ticket, is an honored member of the I.O.O.F.



Leslie Burr Bassett and sister Salom Snow Longley (Picture from the Cadwallader Collection)

Leslie had a cousin named Bassett Cadwallader. His history is seen below.

#### Bassett Cadwallader

The late Bassett Cadwallader of La Grange, Illinois, was born in Maysville, Kentucky, June 13, 1855, a son of John and Amelia (Bassett) Cadwallader. His father was a pioneer photographer in Ohio. His mother was an early leader in woman's activities and was a friend of Susan B. Anthony.

Bassett Cadwallader attended public schools, and when he was nineteen years old, went to work as librarian at Evansville, Indiana. While he was there he originated and developed a decimal system for the cataloging of library volumes which subsequently developed a large following and was recognized by the Library of Congress.

The next change in his work was to join his uncle, Dallas Cadwallader. Together they became well known photographers in Marietta, Ohio.

Then he lived for a time in Parkersburg, West Virginia, maintaining a photograph studio there, in addition to his studio across the river in Marietta. In later years, after living for a time in Indianapolis, he came to Chicago, Illinois, and became engaged in the advertising business.

It was in 1889 that he established his home at LaGrange, Illinois. There he began the long series of electrical experiments and developments that were to fill his active, useful life for many years thereafter. It is interesting to record that he wired the first house in LaGrange that used electricity. It was in LaGrange that he began his experiments with the writing telegraph which resulted in his development of the telautograph. He holds the original patents on the telautograph.

Back in 1891 he started to design and create a new type of electric motor. He devoted practically all of the rest of his life to its development. He maintained a fine electrical laboratory of his own in Boston, Massachusetts, for a number of years. He became one of the leading men in his field of investigation in the United States.

Mr. Cadwallader was married April 27, 1881, at Fremont, Ohio, to Miss Gertrude Victoria Moody, a daughter of Augustus and Antoinette (Rockwell) Moody. Their children are Francis and Florence Cadwallader.

The death of Bassett Cadwallader occurred February 7, 1938. He and his family had been residents of LaGrange, Illinois, for nearly fifty years. Mr. Cadwallader earned a place as an international authority on the study and application of magnetism and in electrical research.



\* \* \* \* \*

Section 8 - New family lines combined or added since the last newsletter

No new families added and no families combined this month.

\* \* \* \* \*

Section 9 - DNA project update.

I have several results that I will post in upcoming newsletters.

Donations of any amount can be made to the Bassett DNA project by clicking on the link below. Any funds donated will be used to fund select Bassett DNA tests that will further our project as a whole and benefit all Bassetts worldwide.

<http://www.familytreedna.com/group-general-fund-contribution.aspx?g=Bassett>

This is just a reminder that the DNA portion of the Bassett Family Association can be found at:

<http://www.bassettbranches.org/dna/>

A current spreadsheet of results can be found at:

<http://www.bassettbranches.org/dna/BassettDNA.xls>

If you don't have Excel and can't open the spreadsheet above, you can now see the DNA test results at the following website.

<http://www.familytreedna.com/public/Bassett/>

Jeffrey Bassett  
520 Salceda Drive  
Mundelein, IL 60060 USA  
bassettgenealogy@gmail.com